



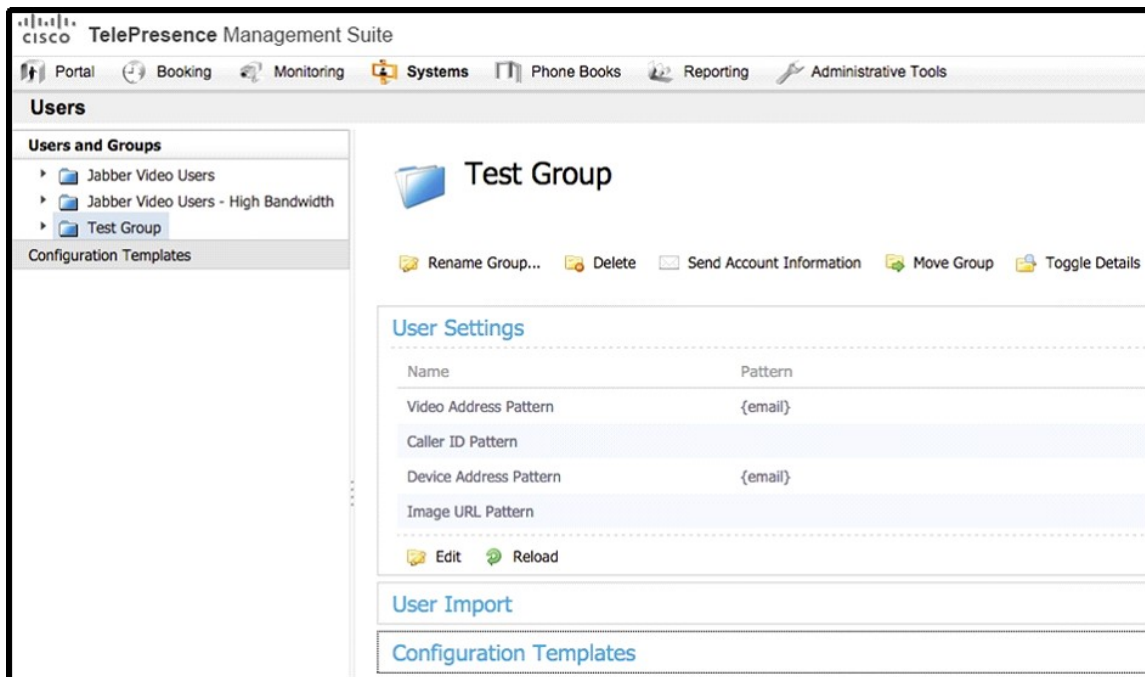
Vendor: Cisco

Exam Code: 210-065

**Exam Name: Implementing Cisco Video Network Devices
(CIVND)**

QUESTION 1

Refer to the exhibit. Which configuration item shown in the exhibit should be used to assign the internal and external video communication server address for this group of users?



- A. User Settings > Video Address pattern
- B. Administrative Tools > User Settings
- C. Configuration Template > Edit Template
- D. User Import > Configuration

Correct Answer: C

QUESTION 2

Which four features are provided by Cisco TelePresence Management Suite? (Choose four.)

- A. Scheduling of video conference calls
- B. Built-in-bridge functionality for multiparty video conferences
- C. SIP-H.323 protocol interworking
- D. Centralized management of conference resources
- E. SMTP email event notification
- F. Endpoint configuration backup and restore
- G. Cisco TelePresence endpoint automated redundancy
- H. Automated resource optimization

Correct Answer: ADEF

QUESTION 3

Management wants to modify Cisco TMS to allow users to configure the call behavior with their

associated devices and dial from a single ID. Which feature needs to be enabled and configured?

- A. Smart Scheduler
- B. Low-touch Provisioning
- C. FindMe
- D. CMR Provisioning

Correct Answer: C

QUESTION 4

Which three features are supported by Cisco TMSPE? (Choose three.)

- A. Simplified provisioning
- B. LDAP user import
- C. Scheduling via Microsoft Outlook
- D. FindMe
- E. Jabber for Windows
- F. Automatic endpoint upgrades

Correct Answer: ABD

QUESTION 5

Which four features are supported by Cisco TelePresence Server for all hardware models in remotely managed mode? (Choose four.)

- A. auto-attendant
- B. ClearPath
- C. Cluster sizes of more than 5 servers
- D. Cascading
- E. Active presence for all devices
- F. Support for Conductor
- G. Native scheduling capabilities

Correct Answer: BDEF

QUESTION 6

A Unified Communications engineer wants to configure a Cisco TelePresence SX endpoint using static IP addressing to use a different TFTP server. Which path will allow the engineer to complete this configuration?

- A. Network Services > Network 1 > DHCP RequestTFTPServerAddress > Off
- B. Network > TFTP > DHCP RequestTFTPServerAddress > Off
- C. Network Services > TFTP > DHCP RequestTFTPServerAddress > Off
- D. Configuration > System Configuration > Provisioning > Set the External Manager Address

Correct Answer: D

QUESTION 7

Which two protocols can be used with the Cisco TelePresence Content Server to allow users to share content from their laptops? (Choose two.)

- A. BFCP

- B. H.239
- C. PCoIP
- D. Switched Presentation
- E. SCCP
- F. RDP

Correct Answer: AB

QUESTION 8

A network engineer wants to automate the monitoring of Cisco TelePresence TX systems. Which step should the engineer take first?

- A. Configure Cisco TMS on the codec.
- B. Configure Medianet on the codec.
- C. Configure NTP on the codec.
- D. Configure Multiway on the codec.
- E. Configure SNMP on the codec.

Correct Answer: E

QUESTION 9

Which three features does Cisco VCS provide? (Choose three.)

- A. native Cisco SCCP telephony integration
- B. SIP-H.323 interworking functionality
- C. native scheduling
- D. SIP trunk integration with Cisco Unified Communications Manager
- E. third-party standards-based H.323 and SIP device registration
- F. reverse proxy functionality

Correct Answer: BDE

QUESTION 10

A technician is tasked with performing a room readiness assessment in preparation for an immersive video endpoint. What are three Cisco best practices regarding lighting recommendations for the room? (Choose three.)

- A. The bulb temperature should be between 4000 and 4100K.
- B. Key lighting should be between 200 and 400 Lux with the endpoint powered on.
- C. Shoulder lighting should not exceed two times the facial lighting values with the endpoint off.
- D. Use direct lighting fixtures.
- E. Within the camera field of view, the lighting for all parts of the room should not fluctuate more than 100 Lux.
- F. Avoid using dimming light control systems.

Correct Answer: ACE

QUESTION 11

Refer to the exhibit. A network engineer configures a Cisco Unified Communications Manager and VCS integration via a SIP trunk. Endpoint A is able to conduct video calls to Endpoint B. When Endpoint A attempts to share presentation content with Endpoint B, Endpoint B sees the presentation video on the main screen rather than on the presentation display. What is the cause?